

# MOULDING SUPPLIES

We don't just sell, We consult you



WATER MANIFOLD, MOULD CLAMP

HOPPER MAGNET, COUPLERS, HOSE PIPE

PIPE FITTINGS & VALVES, WATER BATTERY

INJ. MOULDING M/C. & PROJECTS

DRYER, LOADER, GRINDER, MIXER, ROBOTS



## Beginnings



Satyendra Jain

The development of any big company starts with a first small step. This also applies to **Parshva Enterprise**. The small company founded in 1998 had nothing to do with manufacture of plastic machine & accessories.

At that time Parshva Enterprise was successful in fabrication work, achieving considerable success. During those supply problem arose that had to be solved. Good manifold & processing spares were not found. The Solution was to make quality manifold & accessories for molding machine & extrusion line . One small step, an initial idea that has been consistently expanded upon, leading to an internationally company which continuously drives the plastic industry with new developments.



Quality Product, Quality people and Quality service these three vital ingredients which makes a company renowned are available of **Parshva Enterprise**. We are one of the pioneers in the manufacturing of watermanifold, Mould Clamp, QRC, Moulding Supply Accessories. With the state of the art manufacturing facility at our works it makes us more confident and fast to cater market demands in time with the highest level of precision. Our customer network is established at PAN India level which makes it more comfortable for customer to get associated with us and makes us more reliable.



### THE GREATEST MARKETER OF ALL TIME

" A customer is the most important visitor on our premises.

He is not dependent on us. We are dependent on him.

He is not an interruption in our work. He is the purpose of it.

He is not an outsider in our business.

He is Part of it. We are not doing him a favor by serving him.

He is doing us a favor by giving us an opportunity to do so"

- MAHATMA GANDHI



एक काम स्वच्छता की ओर



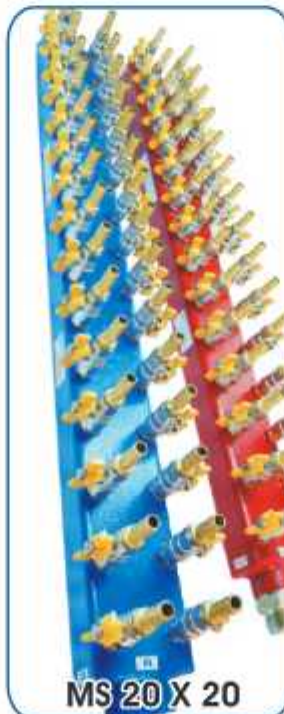
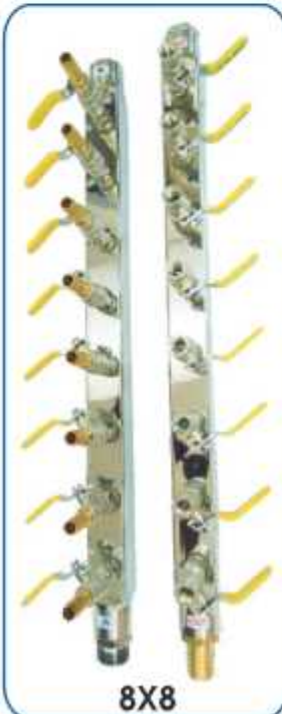
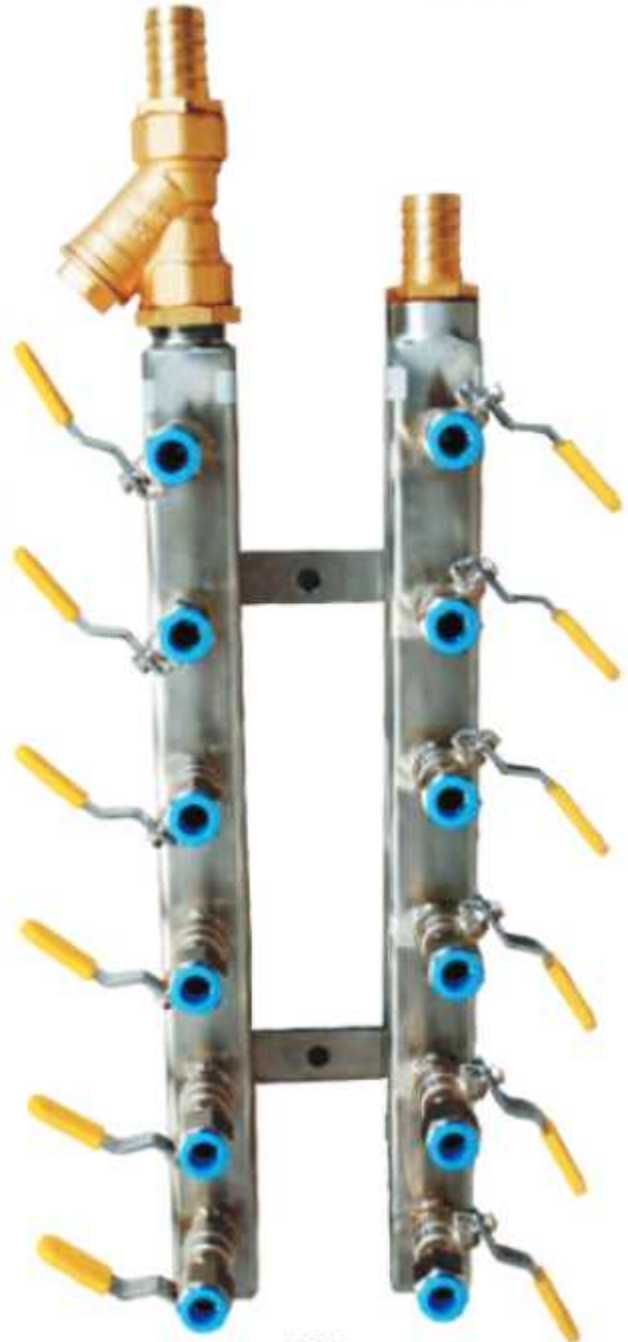
AL-10x10 PU



## Water Manifold

### FEATURES AND BENEFITS :

- Stainless Steel 304 /Mild Steel/ AL
- Main in/out ½" to 2"
- Brass Hose Nipple ¼", ½", 1" ...
- Square Sizes 40Ø, 60Ø, 80Ø
- Brass "Y" Strainer Attached
- Various Port Sizes Available
- Single or Parallel Manifolds
- Buffing/PU Paint outer body
- Loctite Thread Sealant Fittings
- Leakage Proof
- Pressure Gauge Attachment
- PU connectors
- Available Size : 3 Port to 100 Port



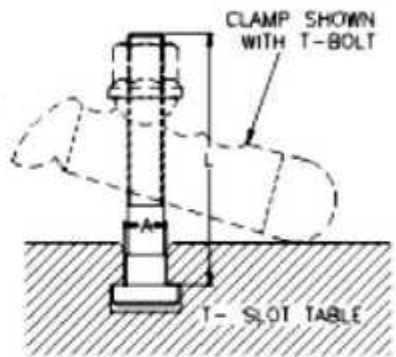
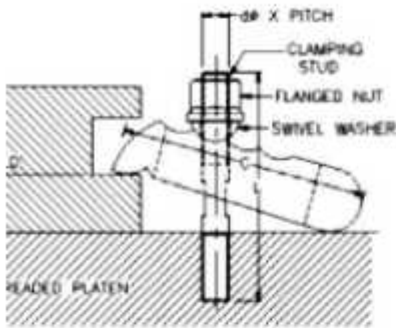
8X8

AL-10X10

MS 20 X 20

6X6

# Mould Clamp

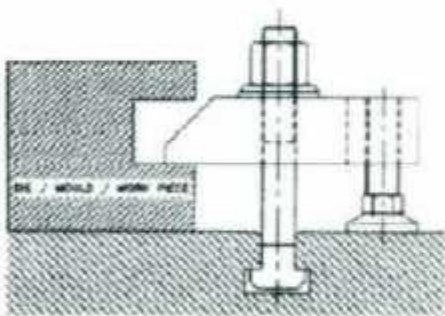


## Mould Clamp with Clamping Stud

Model	dia x Pitch x L	Clamping Range-B	Legth of Clamp -C	Breadth of Clamp
MC-12	Stud M-12 x 1.75 x 100	0-35	110	50
MC-16	Stud M-16 x 2.0 x 125	0-40	135	60
MC-20	Stud M-20 x 2.5 x 175	0-50	160	70
MC-24	Stud M-24 x 3.00 x 200	0-60	180	70

## Mould Clamp with T-Bolt

Model	dia x Pitch x L	Clamping Range-B	Legth of Clamp -C	Breadth of Clamp
MC-12	T-Bolt Stud M-12 x 1.75 x 100	0-35	110	50
MC-16	T-Bolt Stud M-16 x 2.0 x 130	0-40	135	60
MC-20	T-Bolt Stud M-20 x 2.5 x 150	0-50	160	70
MC-24	T-Bolt Stud M-24 x 3.00 x 210	0-60	180	80



Straight Clamp



Inclined Clamp



C-Clamp



Power sliding Clamp



## Hopper Magnet



### Round/ Square

Dia 6"
Dia 8"
Dia 10"
Dia 12"
Dia 14" & above

Our Hopper Magnets provide a properly configured, high-density magnetic field to trap and hold ferrous fines, fragments, and small metal objects. stainless steel tubing and frames are welded into strong, integral units.

### Description :

- Separation Magnets
- Stainless Steel encased
- Place direct in the Hopper to separate metal from polymers and avoid damage of nozzle and hotrunners etc.

## COUPLERS

A quick connect fitting is used to provide a fast, make-or-break connection of fluid transfer lines.

### Features

- Construction High Mechanical Strength SS 304/Brass Component
- Various Size 1/4", 3/8", 1/2", 3/4", 1"

1/4X12mmHose	3/4X3/4 Male thread	3/8X12mmHose	3/4X3/4 Male thread	3/8X3/8 F thread	3/4X3/4 F thread
3/8X12mmHose	3/4X3/4 Male thread With Check valve	3/8X16mmHose	3/4X3/4 Male thread With Check valve	3/8X3/8 F thread With Check valve	3/4X3/4 F thread With Check valve
SS-Long HEX	3/8 X 12mm SS-304	3/8 X 12mm Brass	Flow Indicator 3/8	3/8 X 1/4 Long QRC	3/8X3/8 Male thread





Thunder Hose

Silicon Hose

Hydraulic Hose

S.S. Braided hose

TC



Hot Air Dryer



25 Liter to 1000 Liter

GRANULATORS



Chilling



SS MANIFOLD-30 INLET 3/8 VALVE WITH 10MM PU CONNECTOR PRESSURE GAUGE



## Tumbler Mixer

Tumbler Mixer are most often used for the intimate dry blending of free flowing Granual. Materials being blended are constantly being intermixed as the Double cone rotates. Normal cycle times are typical in the range of 10 minutes, however they can be less depending on the difficulty of blending. Parshva Double Cone Blenders are in stock in 25,50 & 75 kg capacity. Each is constructed of type 304-stainless steel and is internally polished to a 240 grit sanitary finish. The exterior is polished to an easily cleaned 150-grit finish.

### Model :

PEMIX-25; PEMIX-50; PEMIX-100



## Dual Tank Descaling Unit

Easy safe and professional maintenance of mould cooling circuits, which are corroded or partly blocked by scale cause:  
Reduced flow, Reduced efficiency, Longer cycle times  
Temperature problems, Increased maintenance.

### Model : DP - 60

Compact design for easy transport and storage

Motor Power : 1HP, 440 V, 50 Hz 3 phase

Water Flow : 160 LPM @ 1.5bar

Plastic Tank Capacity : 60 ltr + 60 ltr

SS 304 housing body of machine

Caster wheel 4 Nos.

Electric circuite with safety feature

Weight 130 kg

6/8/10/16 line manifold option.



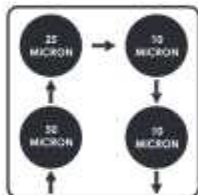
# Micro Filtration

Oil Cleaning Machine

## Change Your Thinking Not Your Oil !!!

### Technical Specifications

- ✓ Pump 7CC Gear type 10 lpm
- ✓ Liquid Compatibility Hydraulic Oil (46-68)
- ✓ Input Nozzle 3/4"
- ✓ Output Nozzle 3/4"
- ✓ Electric Motor 0.37kw (0.5 HP)
- ✓ Cable Size 1.5 sqm X 5 core X 10 mtr.
- ✓ Castors 3" Nylon
- ✓ Filter 50, 25, 10, 6 ■

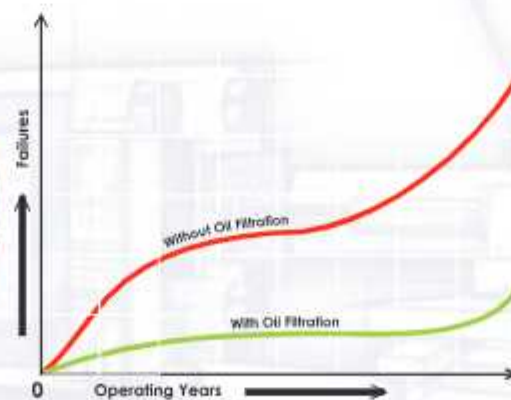


### Model

- PEOCM-4A..... 50W+25W+10P+6P
- PEOCM-4B..... 50W+25W+10GF+6GF
- PEOCM-4C..... 50W+25W+10W+10W



### Why Filtration is Required



### Features And Benefits

- 🔥 Fast return of investment
- 🔥 Precise operation of your hydraulic system
- 🔥 Improved process reliability
- 🔥 Less production cost
- 🔥 Improved availability of your machine
- 🔥 Less cost for maintenance, repairing and oil change
- 🔥 Up to 70% less downtime
- 🔥 Up to 95% less consumption of hydraulic oil

In order to operate hydraulic systems without failure, hydraulic systems are equipped with precise high-tech components. Sludge, resin & dirt in the oil cause friction, wear and malfunction of the hydraulic systems. More than 80% of hydraulic failures are caused by impurities in the oil.

The mechanically oil cleaner removes sludge & dirt particles from hydraulic oil and other mineral oil which is as clean as with NAS value 8. Malfunction of hydraulic oil is extended. The cleaned hydraulic oil is much cleaner than new oil.

All specifications reflect average values and it may vary depend on final machine configuration. Performance specifications are based on theoretical data.



# Mouldflo

Flow monitoring system



- ✓ Increased productivity
- ✓ Reduced waste
- ✓ Reduced cycle time
- ✓ Product consistency
- ✓ Digital monitoring
- ✓ Full validation and reporting
- ✓ Data storage and history tracking



The Mouldflo system will digitally monitor all of the flow circuits within the mould recording data, both flow and temperature, for every circuit. Often overlooked by many moulders, the efficiency of the mould cooling circuit(s) are critical to a stable process and the manufacturer of high quality, dimensionally stable parts.

Mouldflo can protect your mould and improve quality by quickly identifying cooling problems and alerting the user to various common cooling circuit problems, such as:

- No water flow from the mould heater
- Blocked waterways
- Scale / rust build up
- Incorrect piping

Injection moulders currently use a range of methods for distributing and controlling the water flow around the cooling circuit. Traditionally the most common method has been with water flow regulators. Although cost effective flow regulators suffer from a number of inherent problems:

- Bulky / delicate – have to be mounted away from the mould
- Long pipe runs – reduced flow
- Flow restrictions
- Broken sight glasses
- Do not give a true reading of flow
- Sight glasses unreadable due to oxidation
- High levels of maintenance

More recently there has been a trend towards aluminium manifolds mounted either on the mould, or the platens – this has seen significant benefits with regards to flow – but, generally gives the moulder no visual indication of flow.

## change the way you work!

Do you really know how much water is going around your mould?

Mouldflo





### Cooling channel optimization

For the first time Mouldflo offers Mouldmakers a unique way to configurate the cooling circuits with full benchmark.

Mouldmakers must often supply new moulds to the customer complete with a report of operating parameters which should include data relating to the cooling circuits in the mould. Now mouldmakers can easily connect the Mouldflo Test-rig to the mould as part of the benchmarking process.



### Mould Maintenance

Moulds must be maintained regularly to remove scale and rust and to ensure maximum productivity.

Mould cooling circuits are exposed to scale build-up, which will reduce the flow capacity dramatically, causing moulding problems due to increasing temperatures.

Eventually the cooling channels will block and stop the production.

### Flow, temperature and pressure test

With the Mouldflo Test-rig, the cooling channels can be analysed and tested.

The flow and pressure can be controlled exactly to simulate the production setup. All details displayed on the screen:



- Flow
- Temperature
- Pressure Inlet
- Pressure Outlet

- Graphical Interface
- printer function on test-rig



## Our Valuable Clients



Mouldflo

Mould

